

D, DX, DT Series

General Purpose Power-Line Filters (1-200A)



Typical application

- Electronic equipment and measuring instrument

Features and benefits

- Single phase power line filters for general purposes
- Easy installation

Conformity

- CE EN 60939
- CSA C22,2 | available on request for most types
- UL 1283 | available on request for most types
- Climatic category 25/085/21 (IEC 60068-1)

Technical specifications

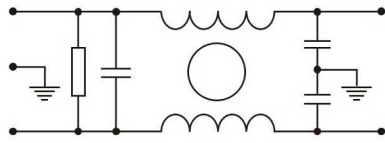
	Symbol	Value	Unit	Remarks
Rated voltage	V_R	250	VAC	
Rated current	I_R	1 ... 200	A	
Ground capacitance		3.3 ... 4.7	nF	
Operating frequency	f_{op}	50/60	Hz	
Insertion loss		up to 80/90	dB	common/differential mode
Leakage current	I_l	≤ 0.8	mA	
Operating temperature	T_{amb}	-25 ... +85	°C	
Storage temperature	T_s	-25 ... +85	°C	
Test voltage - line to line	V_{test}	1500	VDC	
Test voltage - line to ground	V_{test}	1500	VAC	

Electrical properties

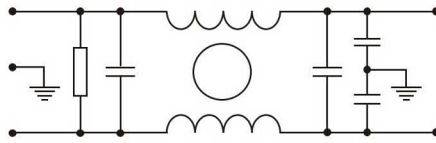
Model	Connection		Rated Current [A]	Ground Capacitance [nF]	Leakage Current [mA]	Discharge Resistance [MΩ]	Circuit Diagram	Package Type	Size (LxBxH) [mm]
	Line	Load							
DL-1D3	F	F	1	4.7	0.8	-	2	B	54x46x22
DL-2D1	F	F	2	3.3	0.5	-	2	A	70x30x21
DL-3D1	F	F	3	3.3	0.5	-	2	A	70x30x21
DL-3D3	F	F	3	3.3	0.5	-	2	B	54x46x22
DL-6D1	F	F	6	3.3	0.5	-	2	A	78x52x38
DL-6D11	F	F	6	3.3	0.5	-	2	A	70x30x21
DL-6D3	F	F	6	3.3	0.5	-	2	B	54x46x22
DL-10D	F	F	10	3.3	0.5	1.5	2	A	78x52x38
DL-15D1	F	F	15	3.3	0.5	1.5	2	A	78x52x38
DL-15D3	F	F	15	3.3	0.5	1.5	2	B	74.5x63.5x36
DL-20D11	S	S	20	4.7	0.8	0.44	2	D	max. 102.5x50.5x36
DL-20D3	F	F	20	3.3	0.5	1.5	2	B	74.5x63.5x36
DL-25D1	S	S	25	3.3	0.5	1.5	2	D	max. 102.5x50.5x36
DL-30D1	S	S	30	3.3	0.5	1.5	2	D	max. 102.5x50.5x36
DL-35D3	S	S	35	4.7	0.8	1.5	2	E	max. 161x95.3x84
DL-50D3	S	S	50	4.7	0.8	1.5	2	E	max. 161x95.3x84
DL-60D3	S	S	60	4.7	0.8	1.5	2	E	max. 161x95.3x84
DL-100D3	S	S	100	6.8	1.0	1.5	2	E	max. 180x115x100
DL-120D3	S	S	120	6.8	1.0	1.5	2	E	max. 180x115x100
DL-150D1	S	S	150	6.8	1.0	1.5	2	G	max. 235x112x140
DL-150D3	S	S	150	6.8	1.0	1.5	2	E	max. 180x115x100
DL-200D1	S	S	200	6.8	1.0	1.0	2	G	max. 235x112x140
DL-1DX13	L	L	1	2.2	0.5	-	1	AX	62x32x22
DL-1DX16	L	L	1	5.0	0.8	-	5	AX	48x24x20
DL-1DX31	L	L	1	4.7	0.8	-	2	BX	39x49x20
DL-3DX31	L	L	3	2.2	0.5	-	1	BX	39x49x20
DL-6DX1	L	L	6	2.2	0.5	-	1	AX	64x32x20
DL-10DX1	L	L	10	2.2	0.5	-	1	AX	64x32x20
DL-20DX1	L	L	20	3.3	0.5	1.5	2	AX	85x50.5x36
DL-3DT	L	L	3	3.3	0.5	1.5	4	I	65x34∅
DL-6DT	L	L	6	3.3	0.5	1.5	4	I	65x34∅
DL-8DT	L	L	8	6.8	1.0	0.15	4	I	92x50∅
DL-10DT	F	F	10	4.7	0.8	0.47	3	I	84x42∅
DL-16DT	L	L	16	22	2.0	0.68	3	I	70x38∅

Legend: F = FASTON 6.3 S = screw terminal L = lead

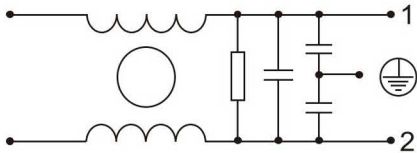
Circuit schematic



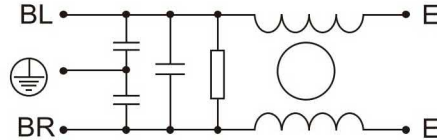
1



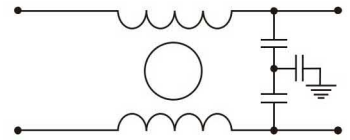
2



3

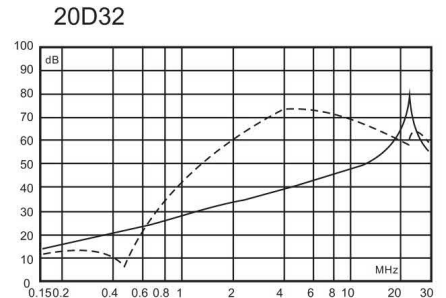
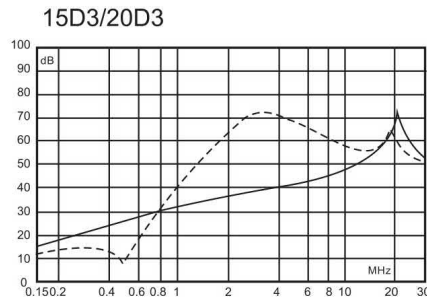
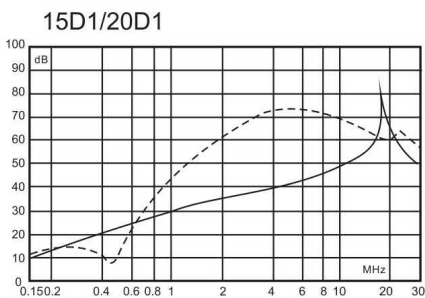
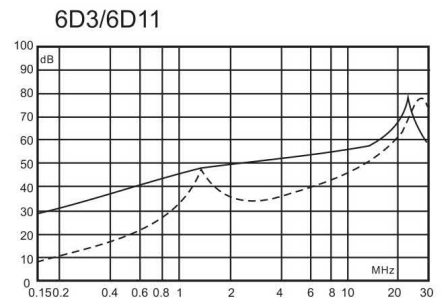
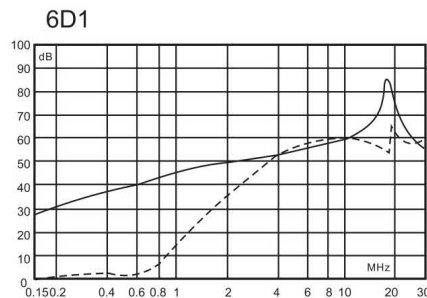
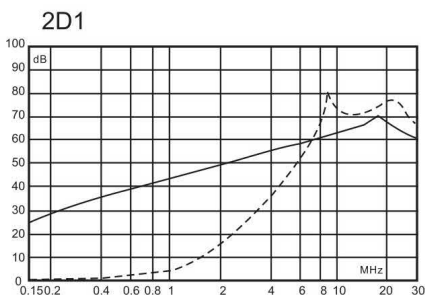


4

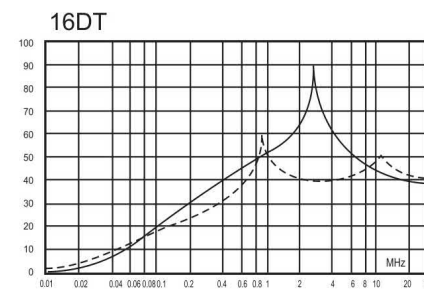
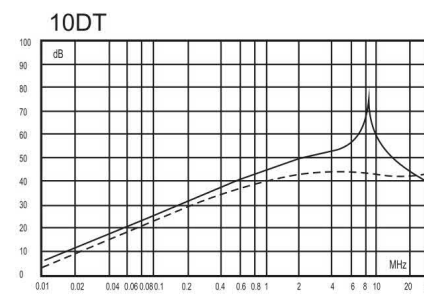
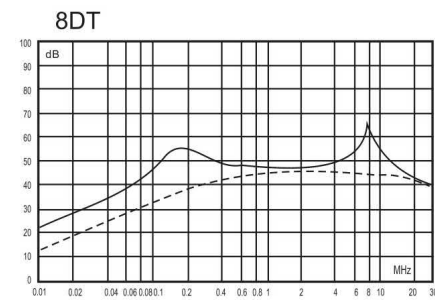
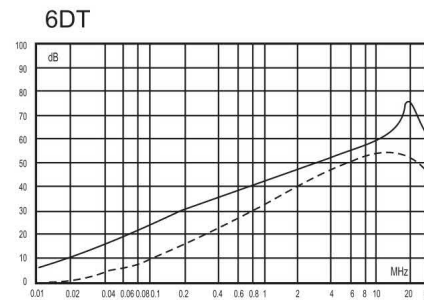
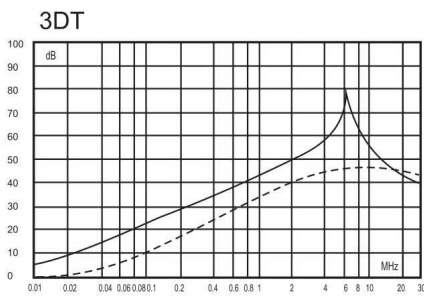
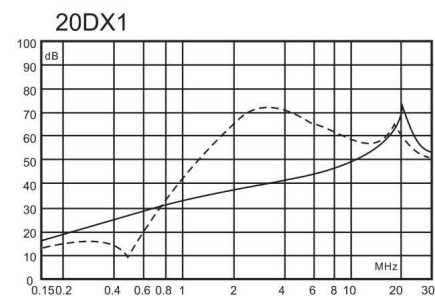
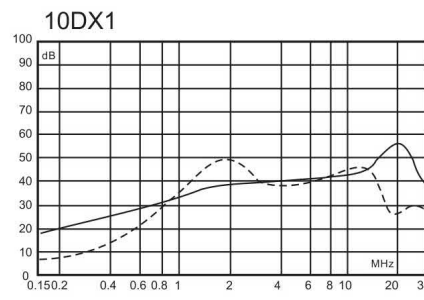
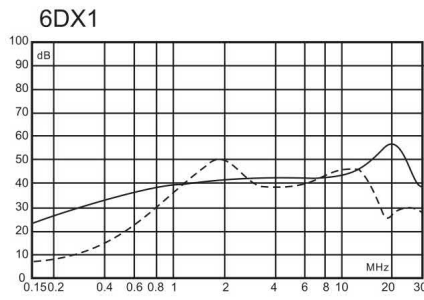
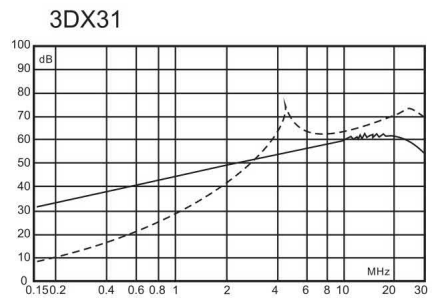
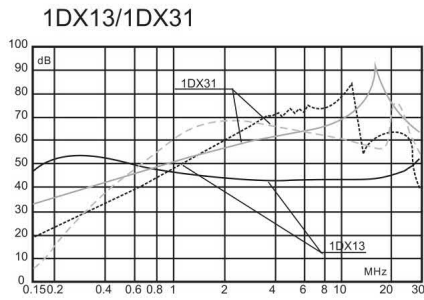
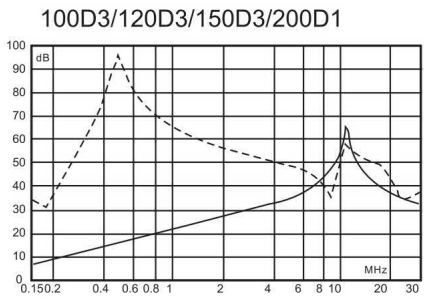
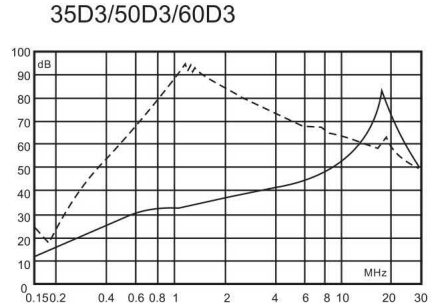
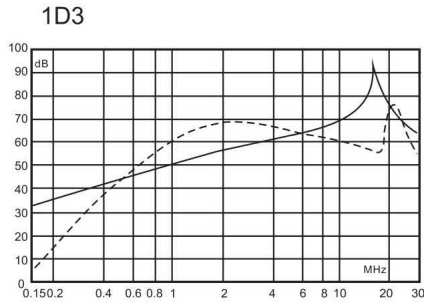
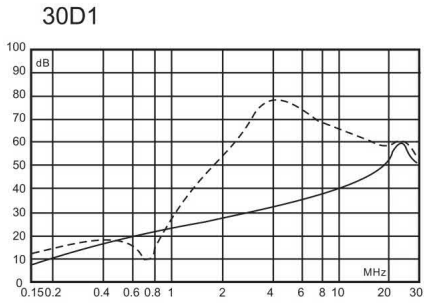


5

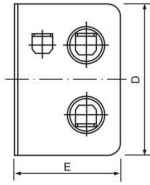
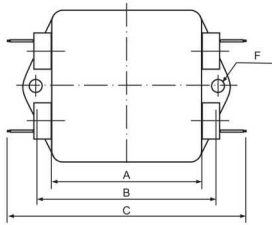
Insertion loss characteristics



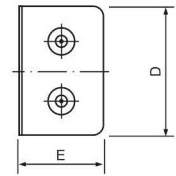
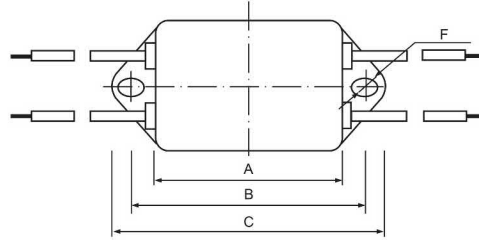
———— Common Mode
 - - - - - Differential Mode



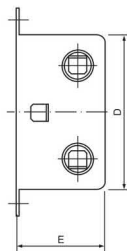
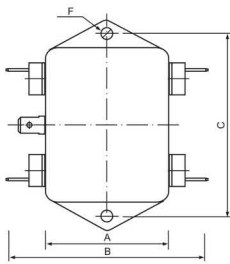
Mechanical packaging



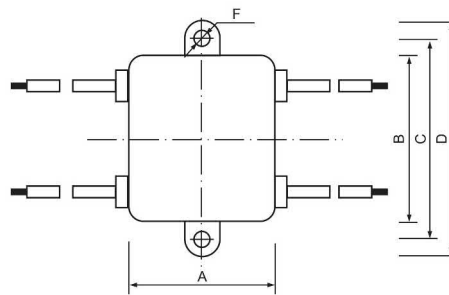
A...



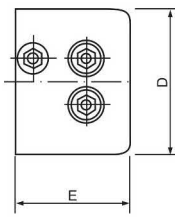
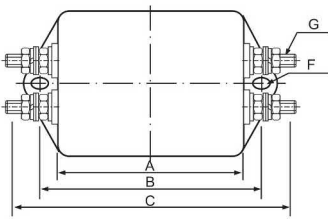
Ax...



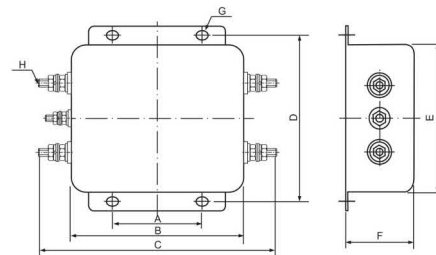
B...



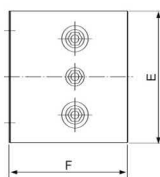
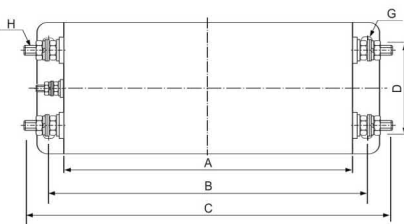
Bx...



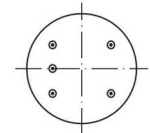
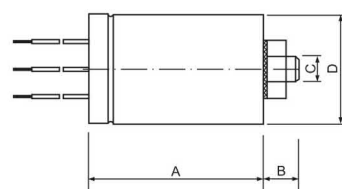
D...



E...



G...



I...

Metralytica GmbH
Oehleckerring 13
22419 Hamburg
Germany

www.metralytica.eu

+49 40 5936175-00
sales@metralytica.eu