

图 A...

图号	A	B	C	D	E	F
A1	44	55	74	30	20	3.8×5.2
A2	52	63	82	52	37	Φ4.5
A3	63.5	74.5	93.5	50.5	27	Φ4.5
A4	63.5	74.5	93.5	50.5	36	Φ4.5
A5	63.5	74.5	93.5	50.5	46	Φ4.5
A6	73	87	103	57	45	4.5×6.5

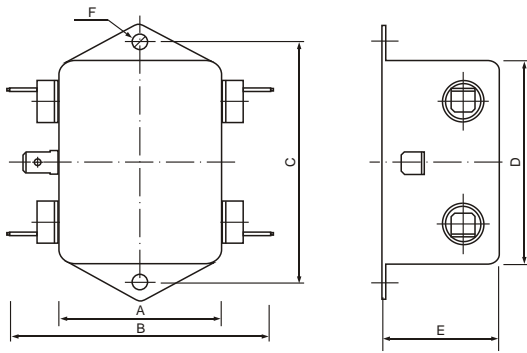


图 B...

图号	A	B	C	D	E	F
B1	32	62	54	46	22	Φ3.8
B2	50.5	80.5	74.5	63.5	36	Φ4.5

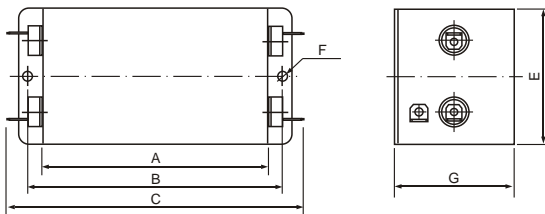


图 C...

图号	A	B	C	D	E	F
C1	95	107	125	57	50	Φ4.5
C2	120	132	150	57	50	Φ4.5

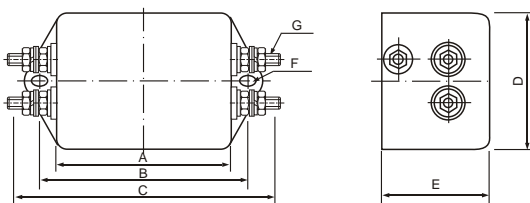


图 D...

图号	A	B	C	D	E	F	G
D1	63.5	74.5	99.5	50.5	36	Φ4.5	M4
D2	73	87	109	57	45	4.5×6.5	M4
D3	90	105	126	80	45	4.5×6.5	M4
D4	94	103	136	57.5	45.5	4.5×6.0	M5

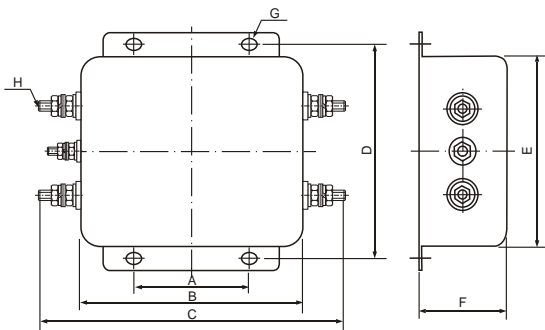


图 E...

图号	A	B	C	D	E	F	G	H
E1	50.8	98.5	138	95.3	84	38.5	4.5×6.5	M4
E2	50.8	98.5	160	95.3	84	38.5	4.5×6.5	M6
E3	50	96	156	95	80	42	4.5×6.5	M8
E4	80	120	180	115	100	50	4.5×6.5	M6
E5	80	120	180	115	100	50	4.5×6.5	M8

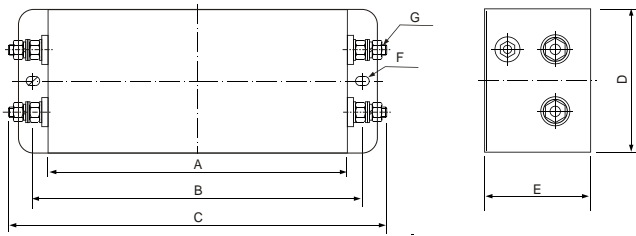


图 F...

图号	A	B	C	D	E	F	G
F1	85	97	123	67	50	Φ4.5	M4
F2	135	142.5	196	51	38	Φ4.5	M6
F3	144	158.5	182	69	51	4.5×6.5	M4
F4	144	158.5	182	69	51	4.5×6.5	M5
F5	144	158.5	210	69	51	4.2×6.0	M6

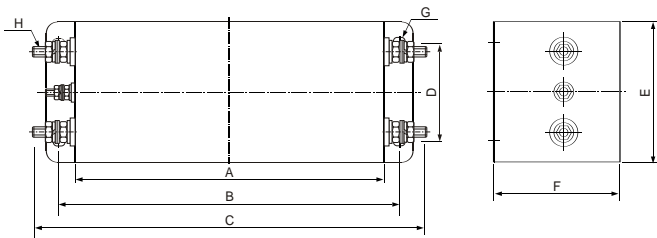


图 G...

图号	A	B	C	D	E	F	G	H
G1	100	115	162	60	70	60	4.5×6.5	M6
G2	130	144	192	58	70	60	4.5×7.0	M6
G3	160	184	202	60	86	58	6.4×9.4	M4
G4	160	184	235	112	140	80	6.4×9.4	M10
G5	220	243	282	70	100	90	6.4×9.4	M6
G6	220	243	282	96	125	90	6.4×9.4	M8
G7	160	184	235	112	140	80	6.4×9.4	M8

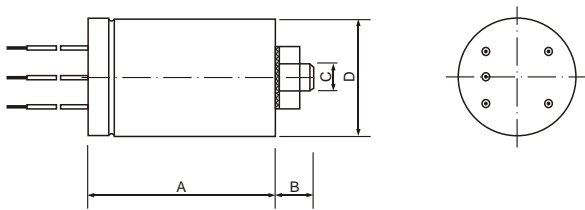


图 I...

图号	A	B	C	D
I1	54	11	M8	Φ34
I2	80	12	M8	Φ50
I3	73	10	M8	Φ42
I4	58	12	M8	Φ38

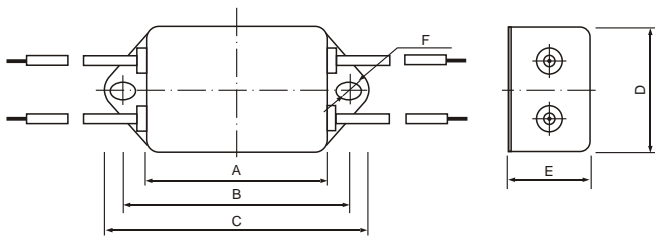


图 AX...

图号	A	B	C	D	E	F
AX1	32	42	48	24	20	3.5×4.5
AX2	44	55	64	30	20	3.8×5.2
AX3	46	54	62	32	22	3.8×5.2
AX4	63.5	74.5	85	50.5	36	Φ4.5

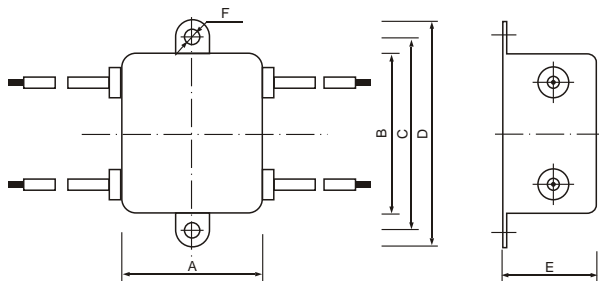


图 BX...

图号	A	B	C	D	E	F
BX1	44	30	39	49	20	3.5×5.5
BX2	32	46	54	62	22	Φ3.8
BX3	44	50	60	70.5	28.5	Φ4.8

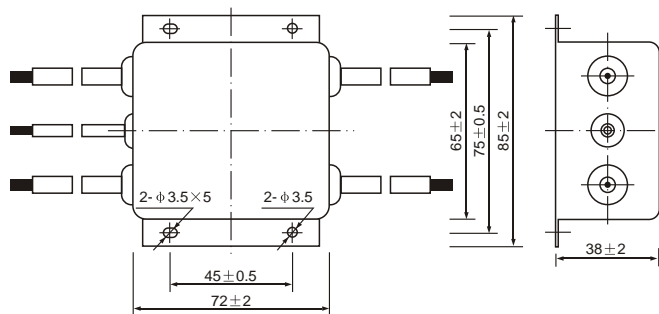


图 EX1...

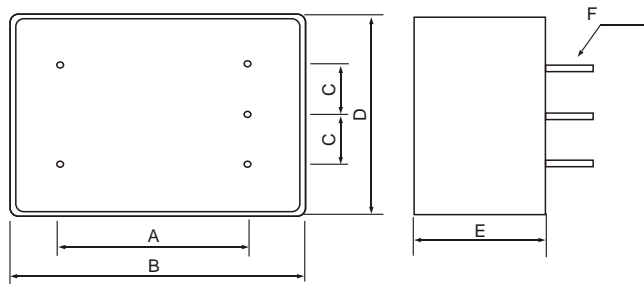


图 H...

图号	A	B	C	D	E	F
H1	16	25	8	25	15	5×Φ1
H2	16	25	8	25	20	5×Φ1
H3	30	44	7.5	30	20	5×Φ1
H4	35.5	49	11.5	35	27	5×Φ1
H5	27	64	12.5	51	36	5×Φ2
H6	32	44	9.5	30	20	5×Φ1
H7	19.8	25.5	9.9	25.5	10.5	5×Φ1
H8	32	45	9.5	28	14	5×Φ1
H9	20	37	10	37	20	5×Φ1
H10	60	73	20	56	28	5×Φ1.5
H11	60	80	20	56	32	5×Φ1.5
H12	52	17.5	17.5	59	28	5×Φ2.0
H13	52	17.5	17.5	64	28	5×Φ2.0

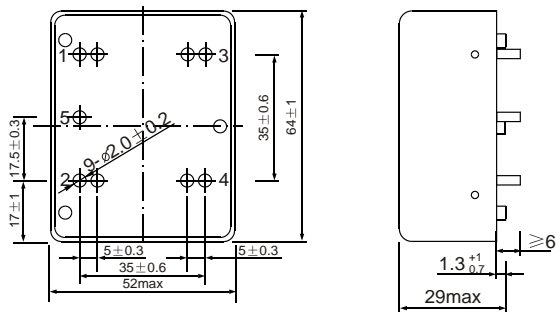


图 H14...

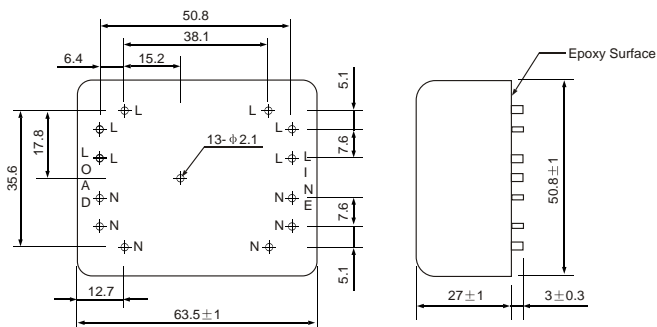


图 H15...

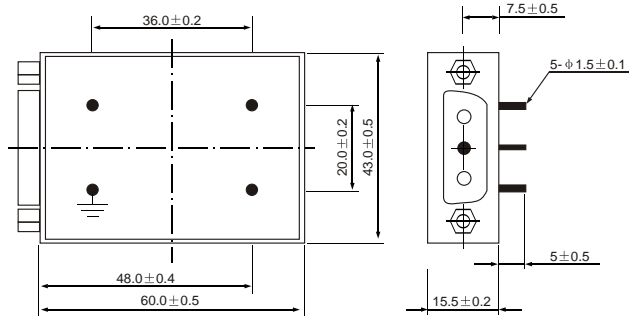


图 H16...

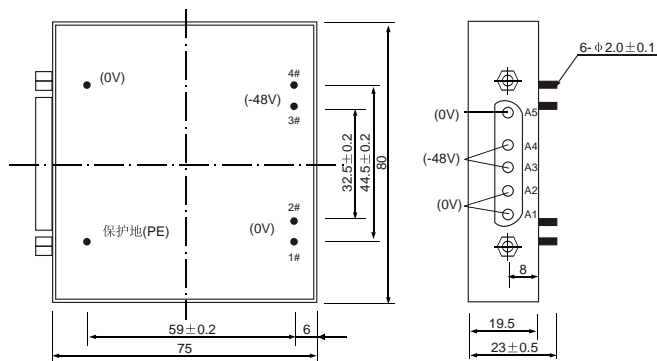


图 H17...

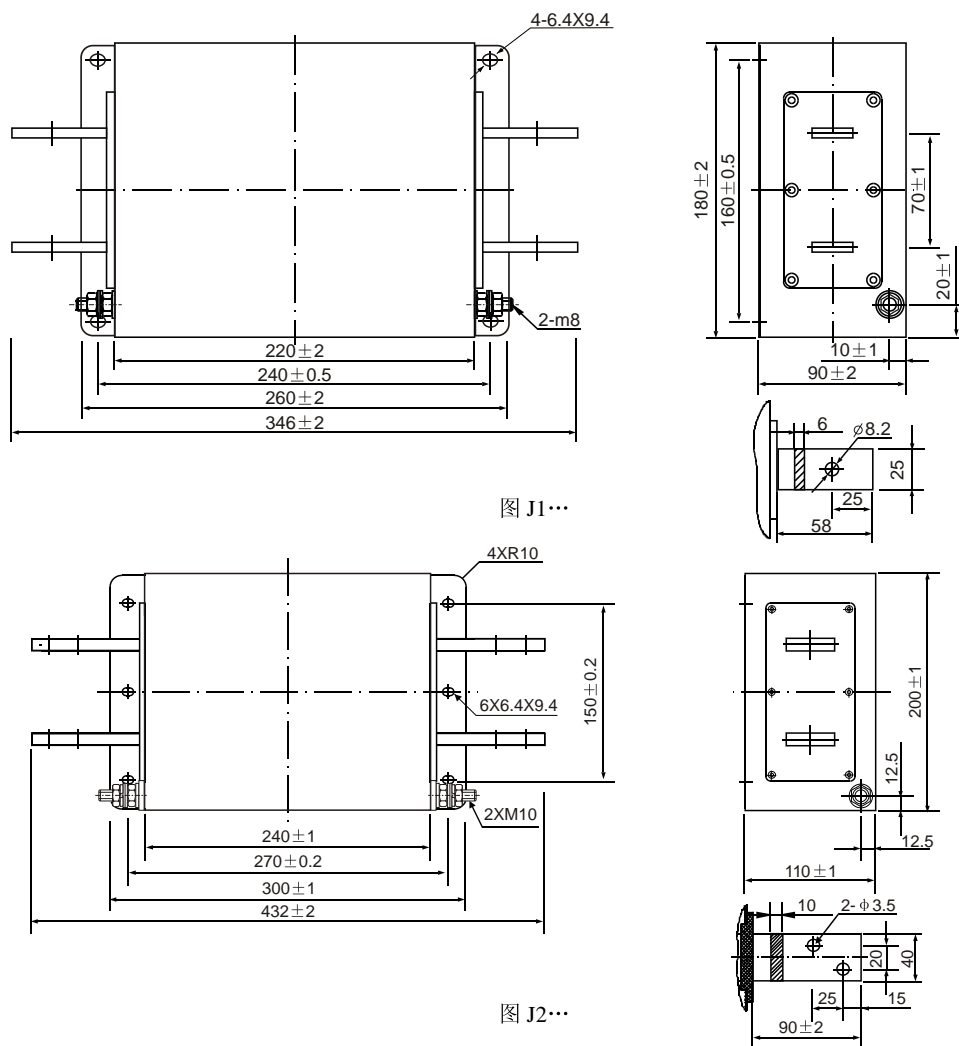


图 J1...

图 J2...

产品命名规则: Rule of nomination



各区位标识定义

额定电流 Rated current 第1区1 (阿拉伯数字表示) Indicate with number	应用及安装方式 application and installing type 第2区2 (英文字母表示) Indicate With letter	安装脚方向 the direction of installing 第3区3 (阿拉伯数字表示) Indicate with number	电路 circuit 第4区4 (阿拉伯数字表示) Indicate with number	接线方式 connector 第5区5 (/阿拉伯数字表示) Indicate with number
Current (A)	D-AC F-DC EA-three phases four wires EB-three phases three wires K、T-多级滤波 multi-stages type H-带差模电感 with differential mode choke type X-接线方式为引线 lead type DZ-插座式 socket type PC-PCB安装 pcb type DT-圆筒式 cylinder type TC-馈通式 feedthrough type	1-与接线端子水平方向 horizontal to connector 3-与接线端子垂直方向 vertical to connector 5-专用系列 special purpose 省略-特殊结构 Omit-special structure	电路参数与电路结构 序列号 The parameter and structure of circuit	01-插片 plug 10-螺栓 screw 20-引线 lead 30-菲尼克斯 phoenix connector 40-端子台 terminal row 50-欧式端子 European terminal row 60-母排 bus bar