

T Series

2-Stage High Performance General Purpose Filters (2-80A)



Typical application

- For digital systems (particularly for switching power supplies) to suppress continuous or intermittent pulse interference

Features and benefits

- High performance filters
- Low leakage current

Conformity

- CE EN 60939
- CSA C22,2 | available on request for most types
- UL 1283 | available on request for most types
- Climatic category 25/085/21 (IEC 60068-1)

Technical specifications

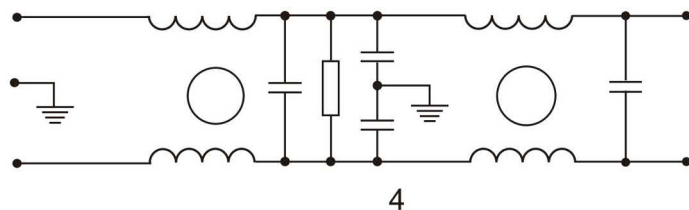
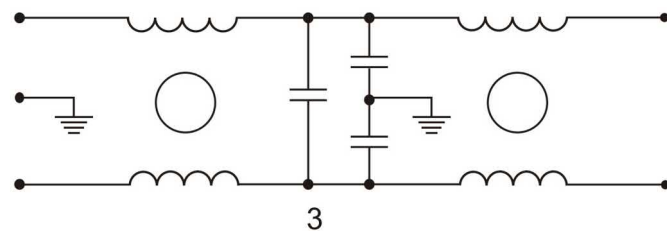
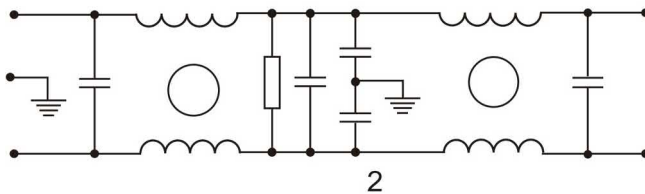
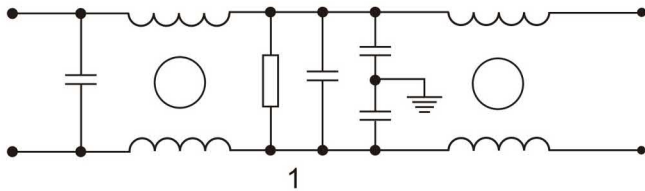
	Symbol	Value	Unit	Remarks
Rated voltage	V_R	250	VAC	
Rated current	I_R	2 ... 80	A	
Ground capacitance		2.2 ... 6.8	nF	
Operating frequency	f_{op}	50/60	Hz	
Insertion loss		up to 100/100	dB	common/differential mode
Leakage current	I_l	0.5 ... 1.0	mA	
Operating temperature	T_{amb}	-25 ... +85	°C	
Storage temperature	T_S	-25 ... +85	°C	
Test voltage - line to line	V_{test}	1500	VDC	
Test voltage - line to ground	V_{test}	1500	VAC	

Electrical properties

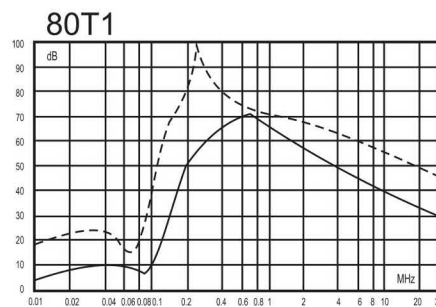
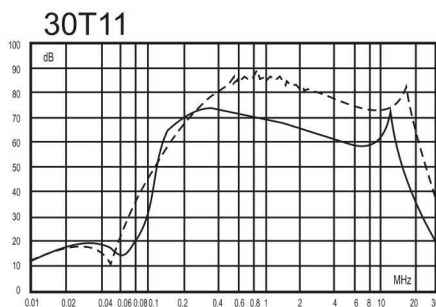
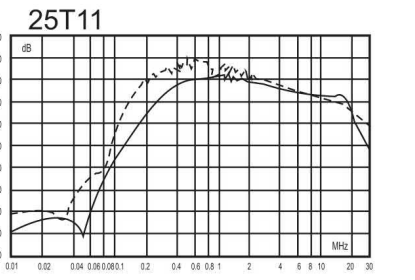
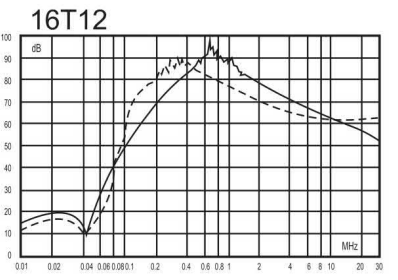
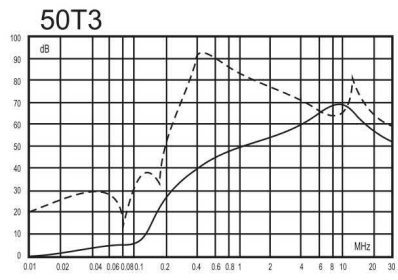
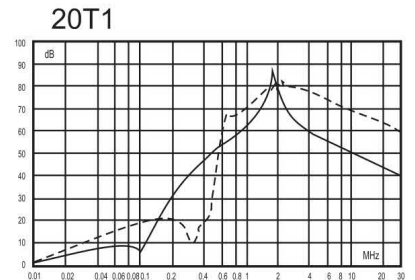
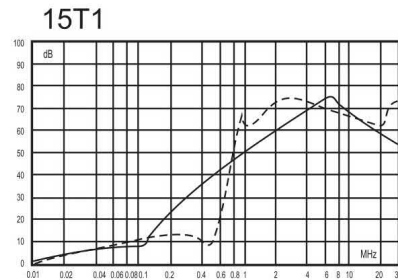
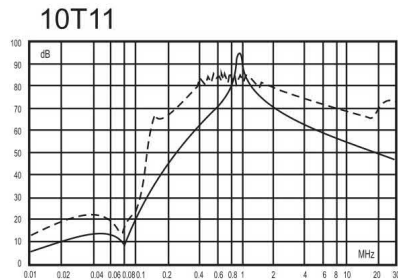
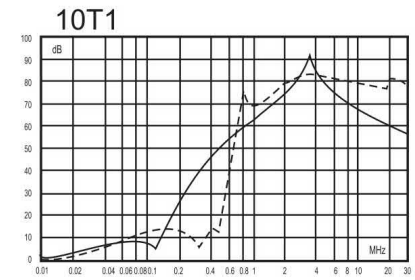
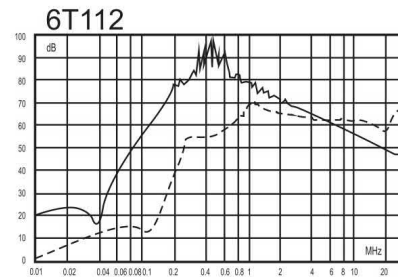
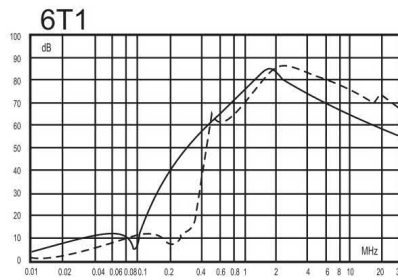
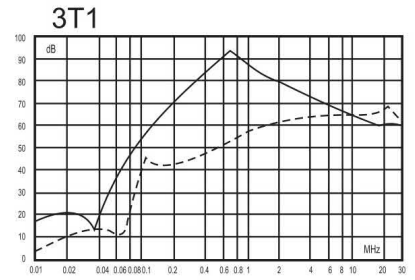
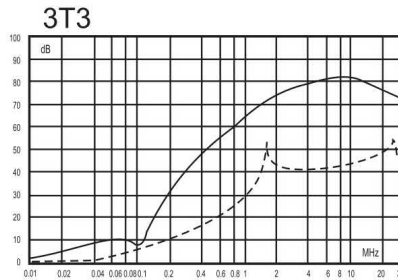
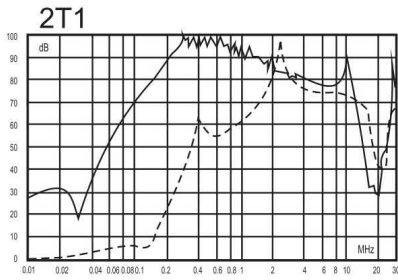
Model	Connection		Rated Current [A]	Ground Capacitance [nF]	Leakage Current [mA]	Discharge Resistance [MΩ]	Circuit Diagram	Package Type	Size (LxBxH) [mm]
	Line	Load							
DL-2T1	F	F	2	2.2	0.5	1	1	A	89.5x50.5x28
DL-3T1	F	F	3	3.3	0.5	1.5	1	A	89.5x50.5x28
DL-3T3	F	F	3	3.3	0.5		3	B	54x46x22
DL-6T1	F	F	6	3.3	0.5	1.5	2	A	89.5x50.5x28
DL-6T112	F	F	6	2.2	0.5	0.47	1	A	89.5x50.5x36
DL-10T1	F	F	10	3.3	0.5	1.5	2	A	89.5x50.5x28
DL-10T11	F	F	10	3.3	0.5	1	2	A	89.5x50.5x36
DL-12T1	F	F	12	4.7	0.8	1	2	A	103x57x45
DL-15T1	S	S	15	3.3	0.5	1.5	2	D	max. 102.5x50.5x36
DL-16T12	S	S	16	3.3	0.5	0.68	2	D	136x57.5x45.5
DL-20T1	S	S	20	4.7	0.8	1.5	2	D	max. 109x57x45
DL-25T11	S	S	25	3.3	0.5	0.68	2	F	188x69x51
DL-30T11	S	S	30	3.3	0.5	0.68	2	F	max. 188x69x51
DL-50T3	S	S	50	6.8	1.0	1.5	2	E	max. 180x115x100
DL-80T1	S	S	80	4.7	0.8	0.68	2	G	max. 282x96x125

Legend: F = FASTON 6.3 S = screw terminal

Circuit schematic

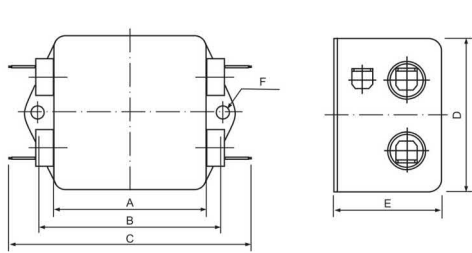


Insertion loss characteristics

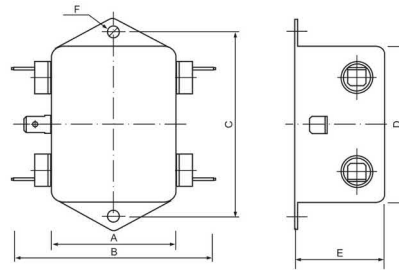


_____ Common Mode
 - - - - - Differential Mode

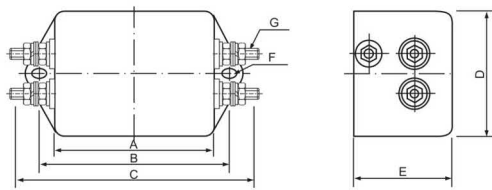
Mechanical packaging



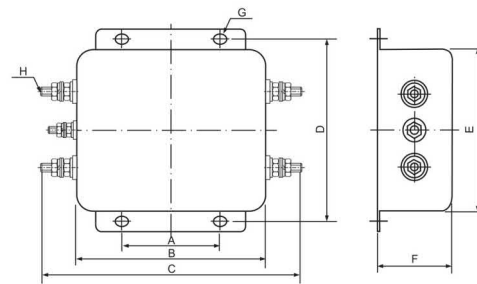
A...



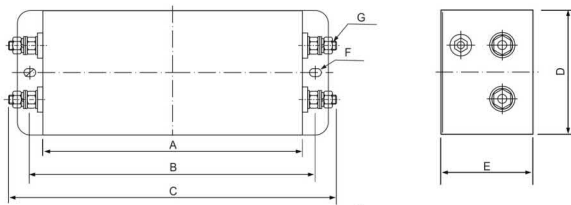
B...



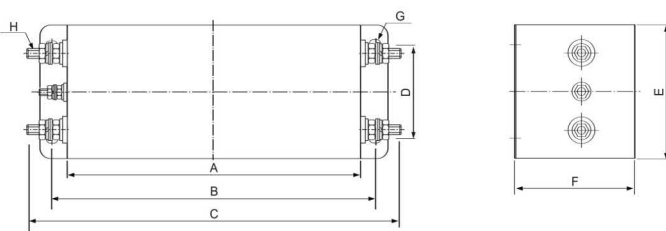
D...



E...



F



G...

Metralytica GmbH
Oehleckerring 13
22419 Hamburg
Germany

www.metralytica.eu

+49 40 5936175-00
sales@metralytica.eu